



Special Education Data Report

LEA Performance on State Performance Plan (SPP) Targets
School Year 2015-2016

Quakertown Community SD

Where this symbol (---) appears, the PDE is not displaying these data on this report to guard against improper statistical comparisons due to small group sizes (n=10 or less), and to protect the confidentiality of those students with disabilities who comprise this category.

Enrollment (School Age)

Source: December 1, 2015 Child Count

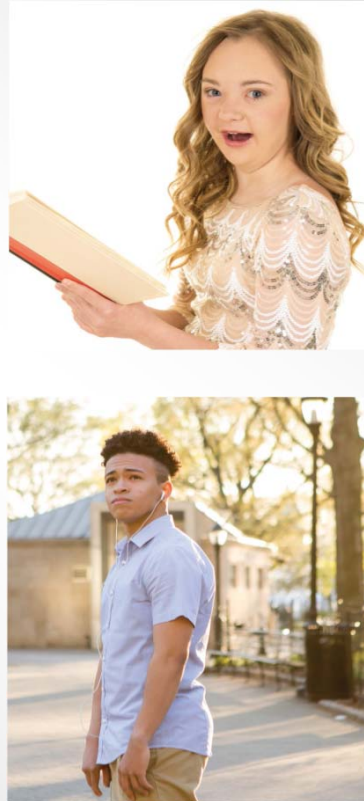
	LEA	State
Total Enrollment ^	5,287	1,734,928
Total Special Education Enrollment	836	276,185
Percent Special Education	15.8%	15.9%
Percent of Special Education Enrollment by Disability		
Autism	10.0%	10.3%
Deaf-Blindness	---	0.0%
Emotional Disturbance	8.9%	8.5%
Hearing Impairment Including Deafness	1.4%	1.0%
Intellectual Disability (Mental Retardation)	8.3%	6.5%
Multiple Disabilities	1.6%	1.1%
Orthopedic Impairment	---	0.3%
Other Health Impairment	17.0%	14.1%
Specific Learning Disability	39.8%	42.6%
Speech or Language Impairment	12.4%	15.0%
Traumatic Brain Injury	---	0.2%
Visual Impairment Including Blindness	---	0.4%

^ Total Enrollment, for Special Education reporting purposes, includes all students enrolled in an LEA regardless of the location where a student is receiving services.

Race/Ethnicity (School Age)

Source: December 1, 2015 Child Count

	Spec Ed	LEA
American Indian/Alaska Native	---	---
Asian	2.3%	2.8%
Black (Non-Hispanic)	2.8%	2.2%
Hispanic	10.6%	7.3%
Multiracial	3.9%	3.5%
Native Hawaiian/Pacific Islander	---	---
White (Non-Hispanic)	79.9%	83.9%



Indicator 1: Graduation Rates

Source: Division of Performance Analysis and Reporting

Graduation rates can be found at: <http://www.eseafedreport.com/>

Indicator 2: Drop Out Rates (Ages 14-21)

Source: July 2015 Submission

LEA Rate	State Rate	SPP/APR Target	LEA Met SPP/APR Target
---	11.95%	10.97%	---

Drop Out Rate = #Dropouts / (#Grads + #Received GED + #Dropouts + #Reached Max Age + #Died) x 100

Indicator 3: Participation and Performance in Statewide Assessments

Source: Division of Performance Analysis and Reporting

Participation and performance data can be found at: <http://www.eseafedreport.com/>

Participation and Performance data for students using accommodations

Indicator 4A: Discrepancy in Suspension and Expulsion Rates

Source: July 2015 Submission

LEA Met SPP/APR Target	No. of LEAs in PA Needed to Achieve SPP/APR Target	No. of LEAs that met SPP/APR Target
---	657	663

Indicator 4B: Discrepancy in Suspension and Expulsion Rates by Race/Ethnicity that includes Noncompliant Policies/Practices/Procedures

Source: July 2015 Submission

LEA Met SPP/APR Target	No. of LEAs in PA Needed to Achieve SPP/APR Target	No. of LEAs that met SPP/APR Target
---	674	670





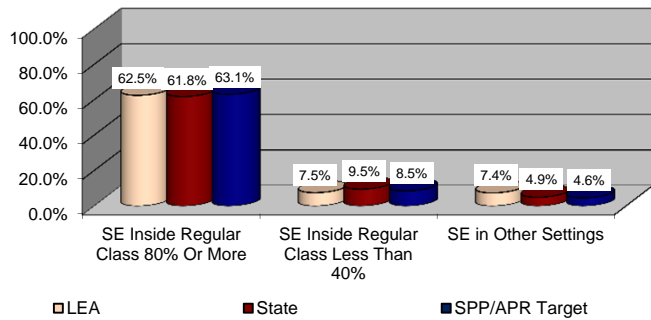
Special Education Data Report

LEA Performance on State Performance Plan (SPP) Targets
School Year 2015-2016

Quakertown Community SD

Indicator 5: Educational Environments (Ages 6-21)

Source: December 1, 2015 Child Count



	SE Inside Regular Class 80% Or More	SE Inside Regular Class Less Than 40%	SE in Other Settings
LEA met SPP/APR Target	No	Yes	No

Indicator 8: School Facilitated Parent Involvement

Source: 2016 Parent Survey Results

LEA Rate	Confidence Interval	State Rate	SPP/APR Target	LEA Met SPP/APR Target
LEA Not Surveyed	LEA Not Surveyed	42.68%	40.84%	LEA Not Surveyed

Indicator 9: Disproportionate Representation by Race/Ethnicity

Source: December 1, 2014 & December 1, 2015 Child Counts

LEA Rate	State Rate	SPP/APR Target	LEA Met SPP/APR Target
0.00%	0.00%	0.00%	Yes

Indicator 10: Disproportionate Representation by Disability Category

Source: December 1, 2014 & December 1, 2015 Child Counts

LEA Rate	State Rate	SPP/APR Target	LEA Met SPP/APR Target
0.00%	0.00%	0.00%	Yes

Indicator 11: Timelines for Initial Evaluations

Source: July 2016 Submission

LEA Rate	State Rate	SPP/APR Target	LEA Met SPP/APR Target
LEA Not Monitored	96.20%	100.00%	LEA Not Monitored



Indicator 13: IEP Post-Secondary Transition Goals and Services (Ages 16-21)

Source: Cyclical Monitoring Data 2015-2016

LEA Rate	State Rate	SPP/APR Target	LEA Met SPP/APR Target
LEA Not Monitored	83.07%	100.00%	LEA Not Monitored

Indicator 14: Post-School Outcomes

Source: 2016 Post-School Outcome Survey Results

Target	LEA Rate	State Rate	SPP/APR Target	LEA Met SPP/APR Target
Target A	LEA Not Surveyed	28.84%	26.40%	LEA Not Surveyed
Target B	LEA Not Surveyed	67.32%	60.80%	LEA Not Surveyed
Target C	LEA Not Surveyed	73.34%	68.80%	LEA Not Surveyed